

INTEGRATED SCIENCE

Time Allowed: 2 hours 15 minutes

Index No.	Random No.						Personal No.		

Candidate's Name:

Candidate's Signature:

School Random No.

District ID:.....

Read the following instructions carefully:

1. Do not write your **school** or **district name** anywhere on this paper.
2. This paper has two sections: **A** and **B**. Section **A** has **40** questions and Section **B** has **15** questions. The paper has **15 printed pages** altogether.
3. Answer **all** questions. **All** the working for both sections **A** and **B** must be shown in the spaces provided.
4. **All** working must be done using a **blue** or **black** ball point pen or ink. Any work done in pencil will **not** be marked.
5. Unnecessary **changes** in your work and handwriting that cannot easily be read may lead to loss of marks.
6. Do not fill anything in the table indicated: "**For Examiners' Use only**" and boxes inside the question paper.

FOR EXAMINERS' USE ONLY		
Qn.No.	MARKS	EXR'S NO.
1 - 10		
11 - 20		
21 - 30		
31 - 40		
41 - 43		
44 - 46		
47 - 49		
50 - 52		
53 - 55		
TOTAL		

SECTION A: 40 MARKS

Questions **1** to **40** carry **one mark** each

1. Name the human body organ that uses sound energy for its function.

.....

2. Give **one** importance of school demonstration gardens.

.....

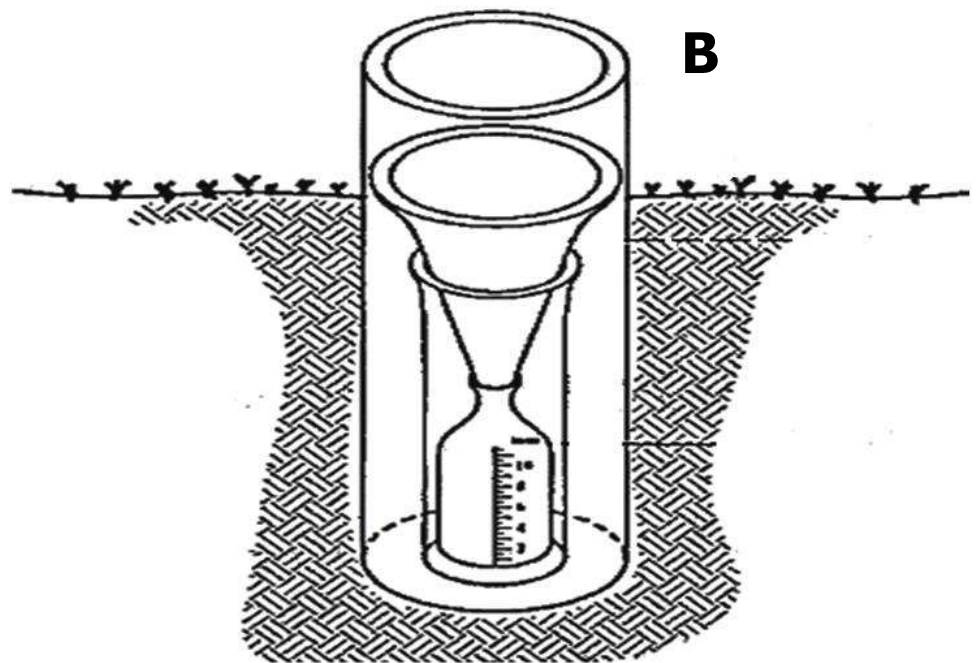
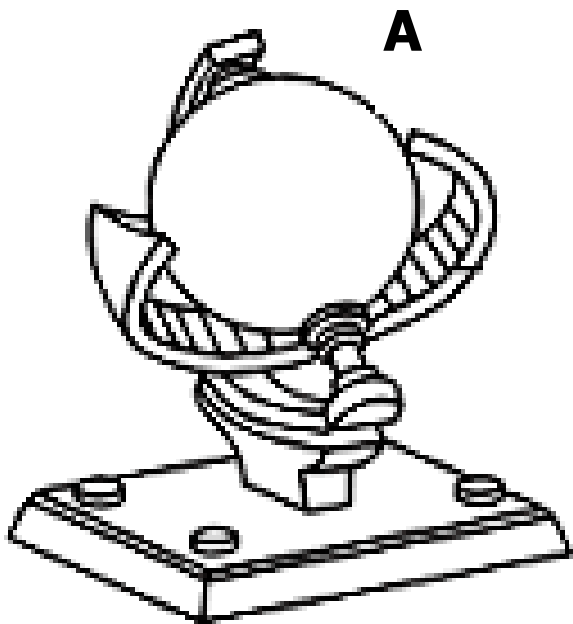
3. Which type of life cycle does a tsetse fly undergo?

.....

4. Why should water for drinking be boiled at school?

.....

The diagrams below are of weather instruments A and B. Use them to answer questions **5** and **6**.



5. Why is it advisable for the above instruments to be put in an open place?

.....

6. Give the difference in the functions of weather instruments **A** and **B**

.....

.....

7. State **one** importance of having enough sleeping and resting time to a P.7 candidate during this COVID 19 period.

.....

8. Give **one** condition necessary for poultry eggs to hatch properly.

.....

9. How does prolonged breast feeding help in child spacing during this period of corona virus outbreak?

.....

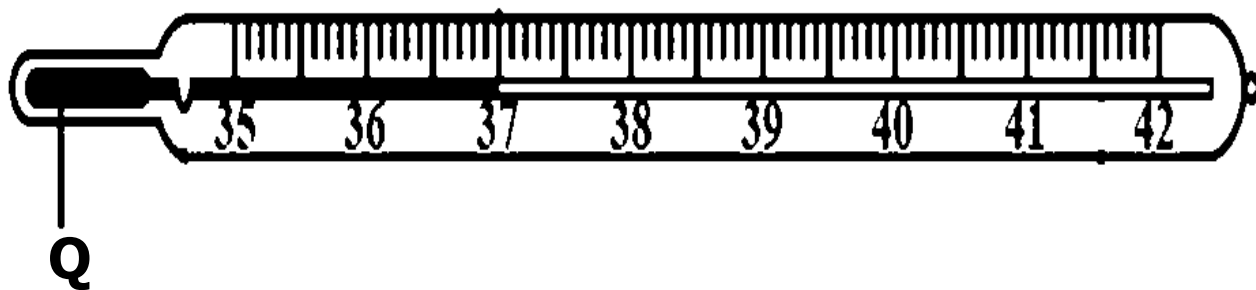
.....

10. Why should every home have a plate stand?

.....



The diagram below shows a type of thermometer. Use it to answer questions **11** and **12**.



11. Why is part **Q** made of a metal?

.....

12. What is the importance of shaking the thermometer after use?

.....

13. Name the part of the eye which receives images.

.....

14. How does paddock system of grazing cattle control tick borne diseases?

.....

15. State the disease that is caused by corona virus in our communities today?

.....

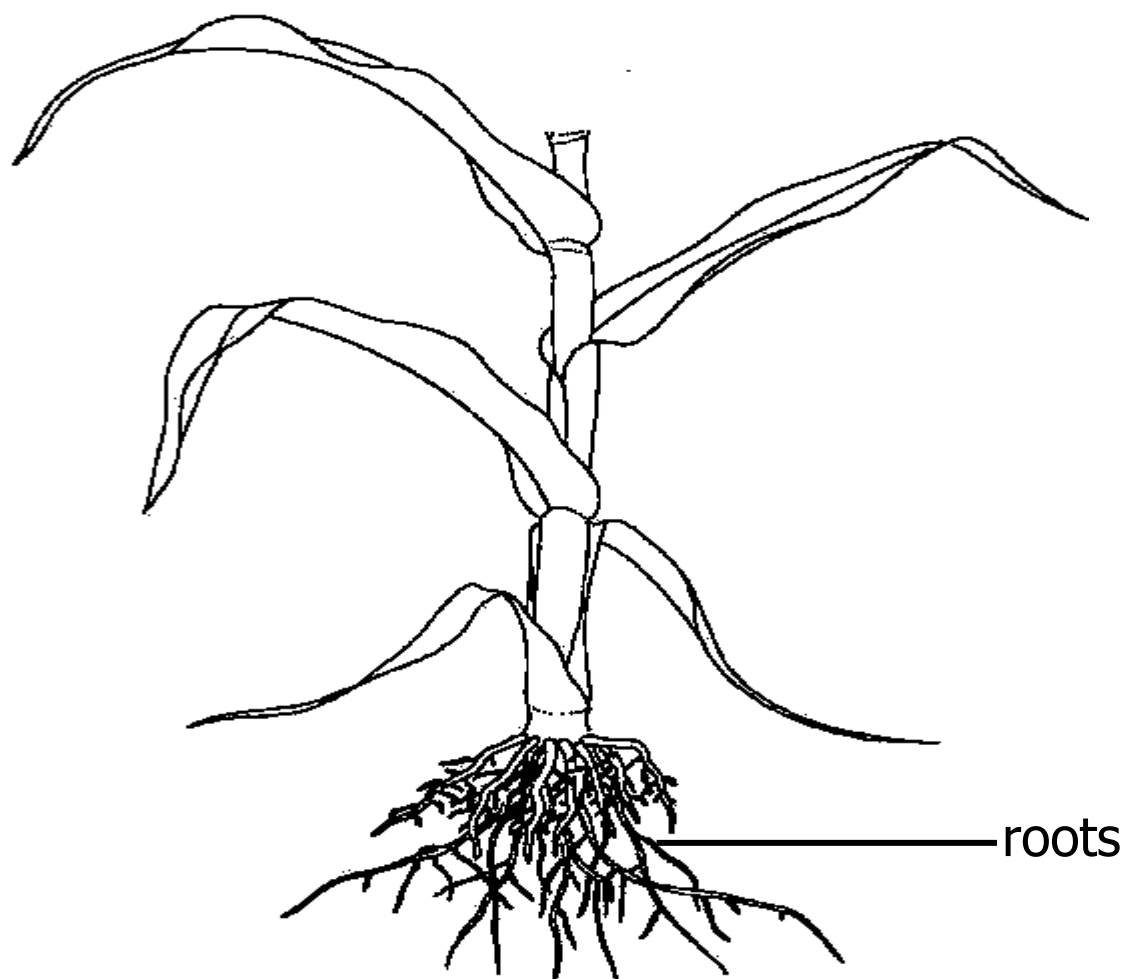
16. Give **one** form of weather

.....

17. Why should water be kept in a first aid box?

.....

Use the diagram below to answer questions **18** and **19**.



18. Name the type of leaf venation in the diagram.

.....

19. Mention **one** crop with similar roots as the ones shown in the diagram.

.....

20. Name the body organ where gaseous exchange takes place.

.....



21. Write down **one** example of an animal that navigates by the use of echoes apart from bats.

.....

22. Give **one** reason why weaning babies are said to be vulnerable?

.....

23. What form of energy is turned into hydro electricity?

.....

24. State the type of soil erosion that is caused by the rain drops as they hit the soil directly.

.....

25. Mention **one** cause of eye defects.

.....

26. What food value is got from eating fruits?

.....

27. Give the difference between drowning and near drowning.

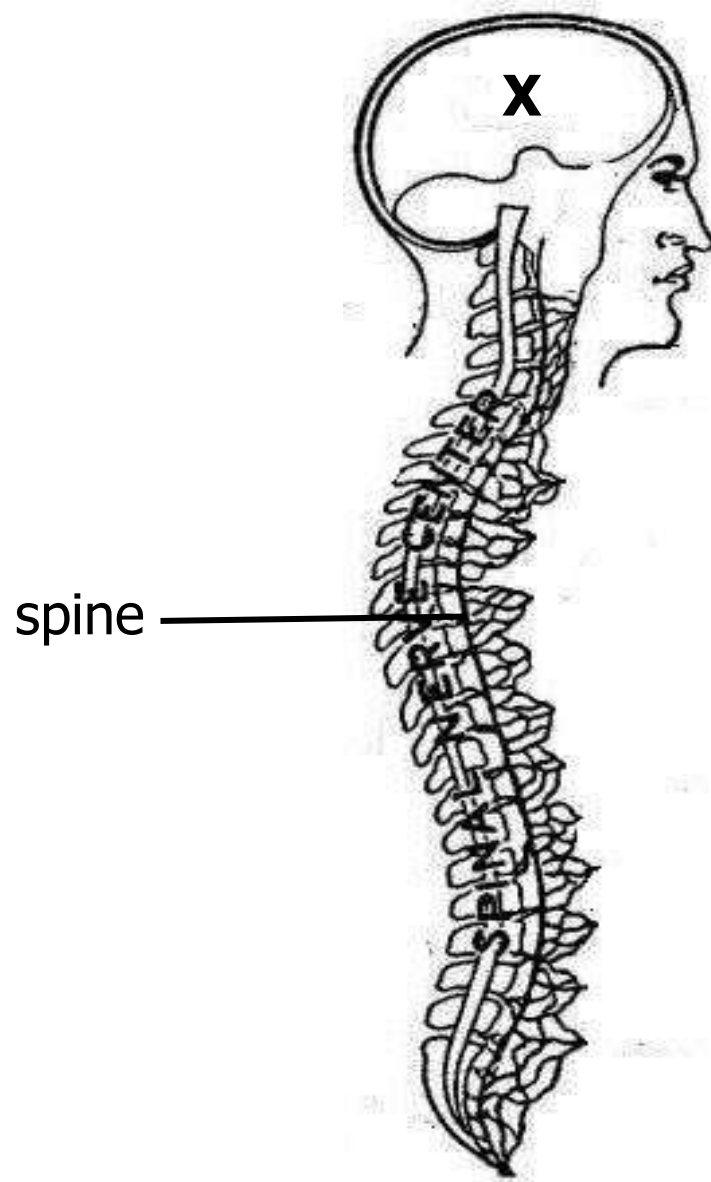
.....

.....

28. In which **one** way can tins containing water be a danger in our environment?

.....

The diagram below shows an important body organ protected by the human skeleton. Use it to answer questions **27** and **28**.



29. Write down **one** danger of damaging the above body organ.

.....

30. Name the part of the skeleton that protects part marked **X**.

.....



31. Give one mineral deficiency disease in infants.

.....

32. Name the process by which water and mineral salts enter the plant roots.

.....

33. How is a single fixed pulley similar to the first class lever?

.....

34. Apart from the Alpine goats, give **one** other exotic breed of goat reared for milk production.

.....

35. How is a switch useful in a circuit?

.....

36. Write **one** importance of health parades in a school.

.....

37. Why is air called matter?

.....

38. In the space below, draw a simple serrated leaf.

.....

39. How is the occurrence of lightning important to farmers?

.....

40. Besides stem tubers, give any two other plants with swollen storage organs.

.....



SECTION B: 60 MARKS

Questions **41** to **55** carry four marks each.

41. Match the following animals to their ways of adaptation to the environment

Animal	Adaptation
Chameleon	Spines
Millipede	Curling
Hedgehog	Camouflage
Polar bear	Thick fur

- (a) Chameleon
- (b) Millipede
- (c) Hedgehog
- (d) Polar bear

42. (a) Why is COVID 19 taken as a dangerous disease in Uganda today?

.....

(b) State any **two** community related activities that have caused COVID 19 in our homes today.

(i)

(ii)

(c) How are children able to control the high rate spread of COVID 19 in schools?

.....

43. (a) How can blindness be caused among people?

.....

(b) How important are the following parts of the eye in the process of seeing?

(i) optic nerves

.....

(ii) retina

.....

(c) Give **one** eye disease.

.....



44. (a) Outline **two** types of bee hives.

(i)

(ii)

(b) Give **one** advantage of growing flowering plants near a bee hive.

.....

(c) Identify **one** material bees collect from trees to repair hives.

.....

45. (a) Why can't sound travel through a vacuum?

.....

(b) Give **one** way echoes are useful to pilots of ships.

.....

(c) Write down **one** disadvantage of echoes in our environment.

.....

(d) How are echoes prevented in theatres and halls?

.....

46. Below are drawings of certain garden tools. Identify a correct statement from the list below to show the use of each tool to a farmer.

Tool A



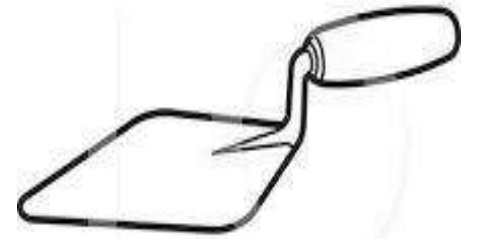
Tool B



Tool C



Tool D



For collecting rubbish
For spraying crops
For turning manure

For transplanting seedlings
For cutting tree stumps
For cutting tree branches

(a) Tool A

(b) Tool B

(c) Tool C

(d) Tool D



47. (a) How are renewable resources different from non-renewable resources?

.....
.....

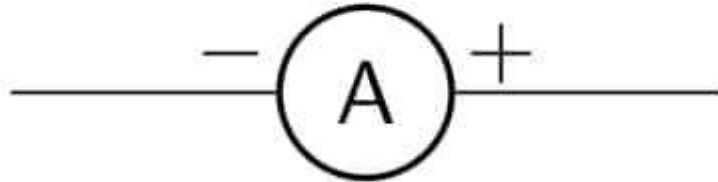
(b) What type of energy is produced by the following

(i) Uranium

(ii) Water waves

(iii) Sun

48. (a) Name the electrical symbol shown below.



.....

(c) State **one** advantage of fuses.

.....

(d) Mention any **two** reasons why a fuse may break or blow.

(i)

(ii)

49. (a) Complete the table below correctly.

Stimulus	Tropism
(i) Light / sunlight
(ii)	Hydrotropism
(iii)	Geotropism

(b) State **one** way plants control water loss during long dry season

.....



50. (a) What scientific term is used refer to broken or cracked bone in the body?

.....

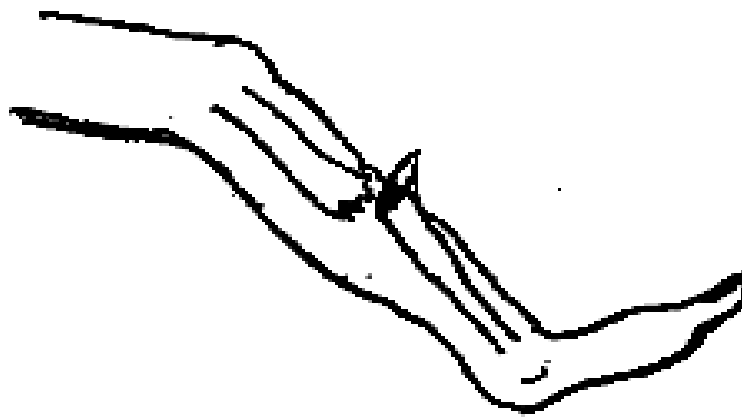
(b) Give **one** sign that can be used to identify a person with a cracked bone in his or body.

.....

(c) State the first aid given to a person who has got a cracked bone.

.....

(d) Name the type of broken bone shown in the diagram below.



.....

51. (a) What do we call a mixture of two or more metals?

.....

(b) Give **one** example of a common mixture of metals.

.....

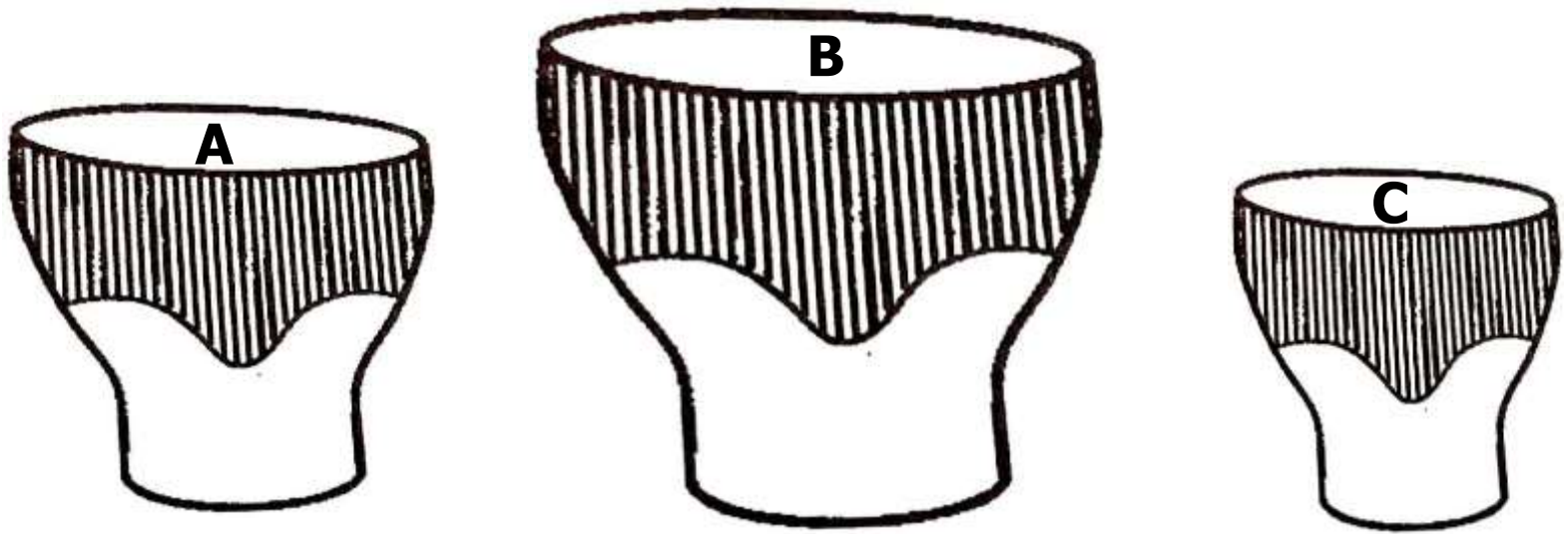
(c) How does heat move from one point of a metal to another?

.....

(d) Apart from painting, give any other method of preventing metallic objects from rusting.

.....

52. The diagrams below show percussion musical drums of three different sizes. Use them to answer the questions that follow.



- (a) Which drum will produce sound with the;
- (i) Highest pitch
- (ii) lowest pitch

(b) What makes the drum given in (a) (i) above to produce a high pitch?

.....

(c) Apart from drums, mention any other percussion instrument that produces sound.

.....



53. Study the list of common crops below and use it to answer questions about it.

Millet, Tea, Beans, Cotton.

(a) Which of the above crops is grown and harvested more than once?

.....

(b) Which of the crops above is a raw-material to textile industry?

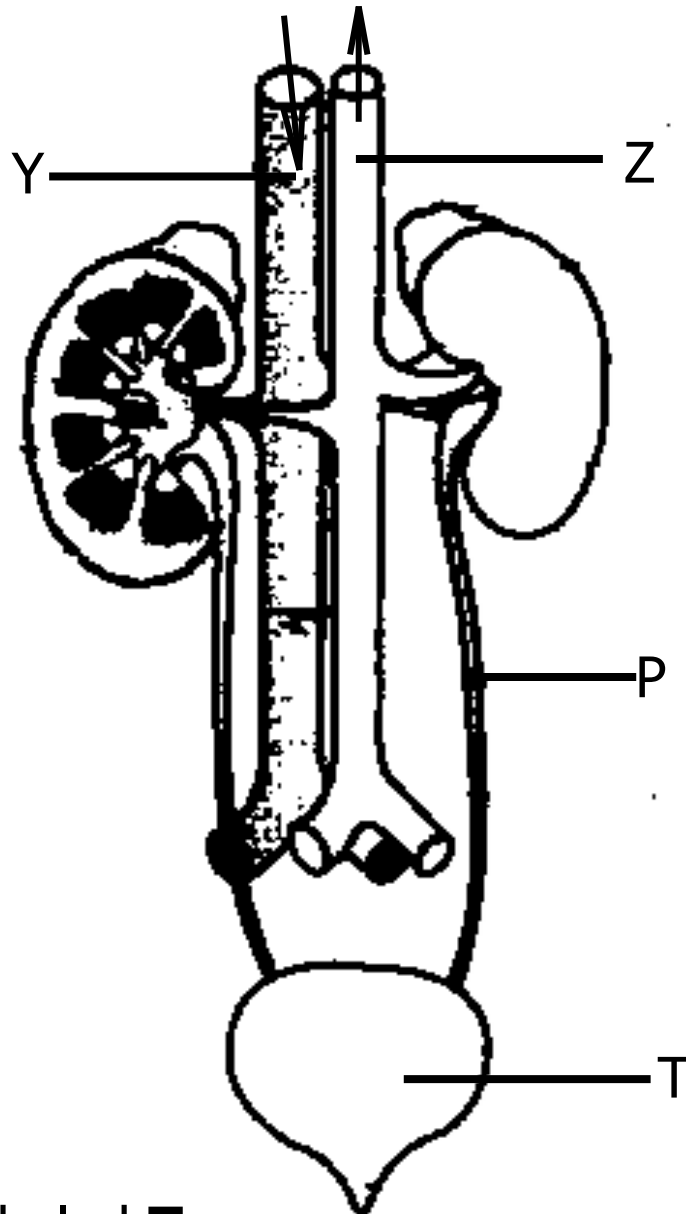
.....

(c) Mention **two** ways we can care for our crops.

(i)

(ii)

54. The diagram below shows one of the human body organs. Use it to answer the questions that follow.



(a) Name parts labeled **T**.

.....

(b) State the difference between blood carried by vessel **Y** and **Z**.

.....

.....

(c) Mention **one** disease that can cause the blockage of part P.

.....

(c) How can such blockage be avoided in humans?

.....

55. (a) Why is a knife regarded as a simple machine?

.....

(b) Give **one** advantage of machines to people.

.....

(c) Find the weight at **K**.

(02 Marks)

